

Valves for air separation

Air separation –
Expertise in demanding applications



The right selection for your air separation processes

Stages	Media	Pressure range	Temperature range	Abrasion	Corrosion	Valve
Compressors and cooling water plant	Air	10-40 bar	Ambient	Low	Low	Desponia® with stainless steel disc and NBR liner, Elara with stainless steel body-disc and MPTFE seat
	Water	2-4 bar	15-25°C	Low	Low	Desponia® with stainless steel disc and EPDM liner
Pre-Purification units	Compressed air	10-40 bar	15-35°C	Low	Low	Desponia® with stainless steel disc and NBR liner, Elara with stainless steel body-disc and MPTFE seat
Cryogenic distillation	Liquefied gases	1-5 bar	-150°C – -200°C	Low	Low	Cryogenic ball valves
Pressure Swing Adsorption	Air	4-10 bar	20-40°C	Low	Low	Desponia® with stainless steel disc and NBR liner
	Oxygen, nitrogen	4-10 bar	20-40°C	Low	Low	Desponia® with stainless steel disc and EPDM liner
Membrane separation	Air	5-20 bar	Ambient	Low	Low	Desponia® (plus) with stainless steel disc and NBR liner
	Oxygen, nitrogen	5-20 bar	Ambient	Low	Low	Desponia® (plus) with stainless steel disc and EPDM liner
Purification	Air, oxygen, nitrogen	5-30 bar	Ambient	Low	Low	Elara with stainless steel body-disc and MPTFE seat
Drying and dehydration	Wet and dry gases	1-20 bar	10-40°C	Low	Low	Stainless steel ball valves
Compression and liquefaction	Compressed gases	150-200 bar	Ambient	Low	Low	Stainless steel ball valves
	Liquefied gases	2-10 bar	-150°C – -200°C	Low	Low	Cryogenic ball valves

Desponia® and Desponia® plus Elastomer-lined butterfly valve



Body construction	Wafer, Lug, U-Section
Nominal diameter	DN 25–1600 (1"–64")
Max. working pressure	Up to 20 bar
Flange connection	PN6, PN10, PN16, ANSI cl. 150, JIS, AS, AWWA, etc.
Temperature range	–20°C to 200°C
Body material	Ductile iron, stainless steel
Disc material	Stainless steel
Liner material	EPDM, NBR
Special executions	Executions for explosive atmospheres

Elara Double eccentric butterfly valve



Body construction	Wafer, Lug
Nominal diameter	DN 50–600 (2"–24")
Max. working pressure	Up to 50 bar
Flange connection	PN10, PN16, PN25, PN40, ANSI cl. 150/300
Temperature range	–50°C* to 400°C
Body material	Stainless steel
Disc material	Stainless steel
Seat material	MPTFE

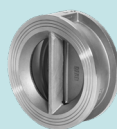
3

Other products



Rhea

Swing check valve, DN 32–600, available in various executions.



Neptunia

Dual plate check valve, DN 50–600, Ductile iron and Stainless steel.



Stainless steel ball valves

2- way valves in stainless steel, available with 2- or 3-piece body.



Actuators and accessories

Actuators and a large range of accessories are available to complete the system.

We are there for you. With our global expertise in industrial applications, we understand your requirements and offer expert advice at every stage of your project. At the same time, you can benefit from our international product standards thanks to our global know-how. Our highly skilled technical team, coupled with the quality and durability of our products, makes us a reliable partner for industrial valve solutions.